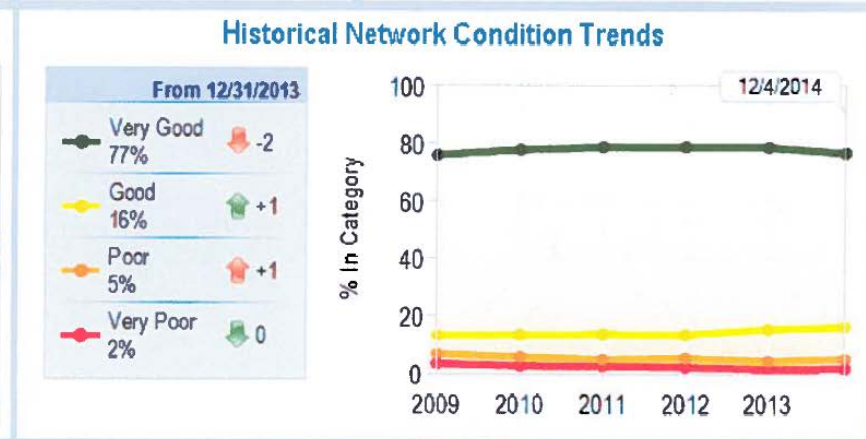
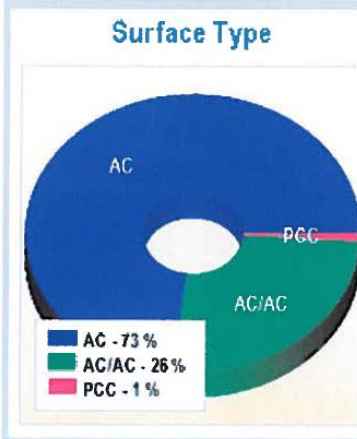
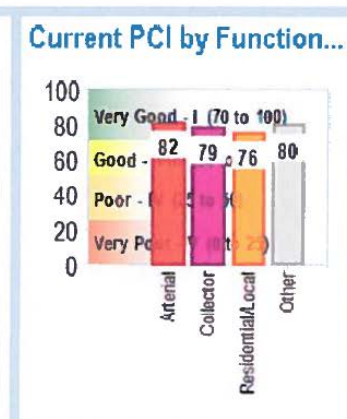
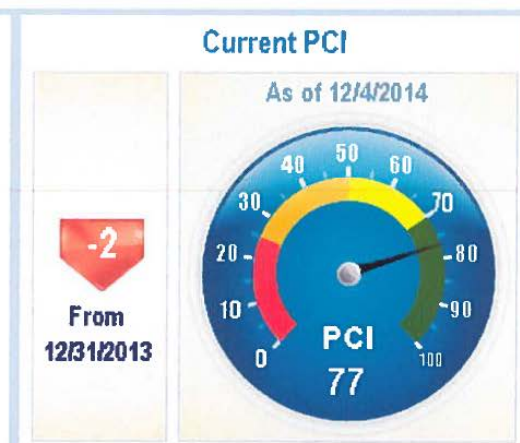
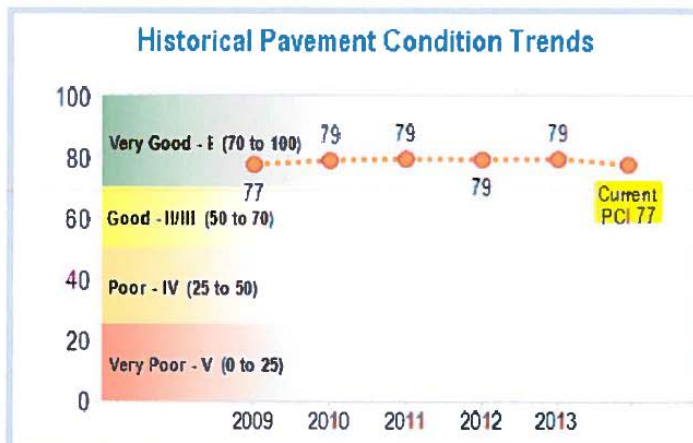


# Data Collection and Reporting

- Pavement Management Systems
- MicroPaver
  - Agencies have used for 30+ Years.
  - APWA and Army Corp of Engineers Standard
- StreetSaver
  - Developed through Texas Transportation Institute for Bay Area MPO Metropolitan Planning Commission
  - RTC uses to evaluate Regional Network

# StreetSaver Dashboard



# Project Selection Process

## Integrated Elements

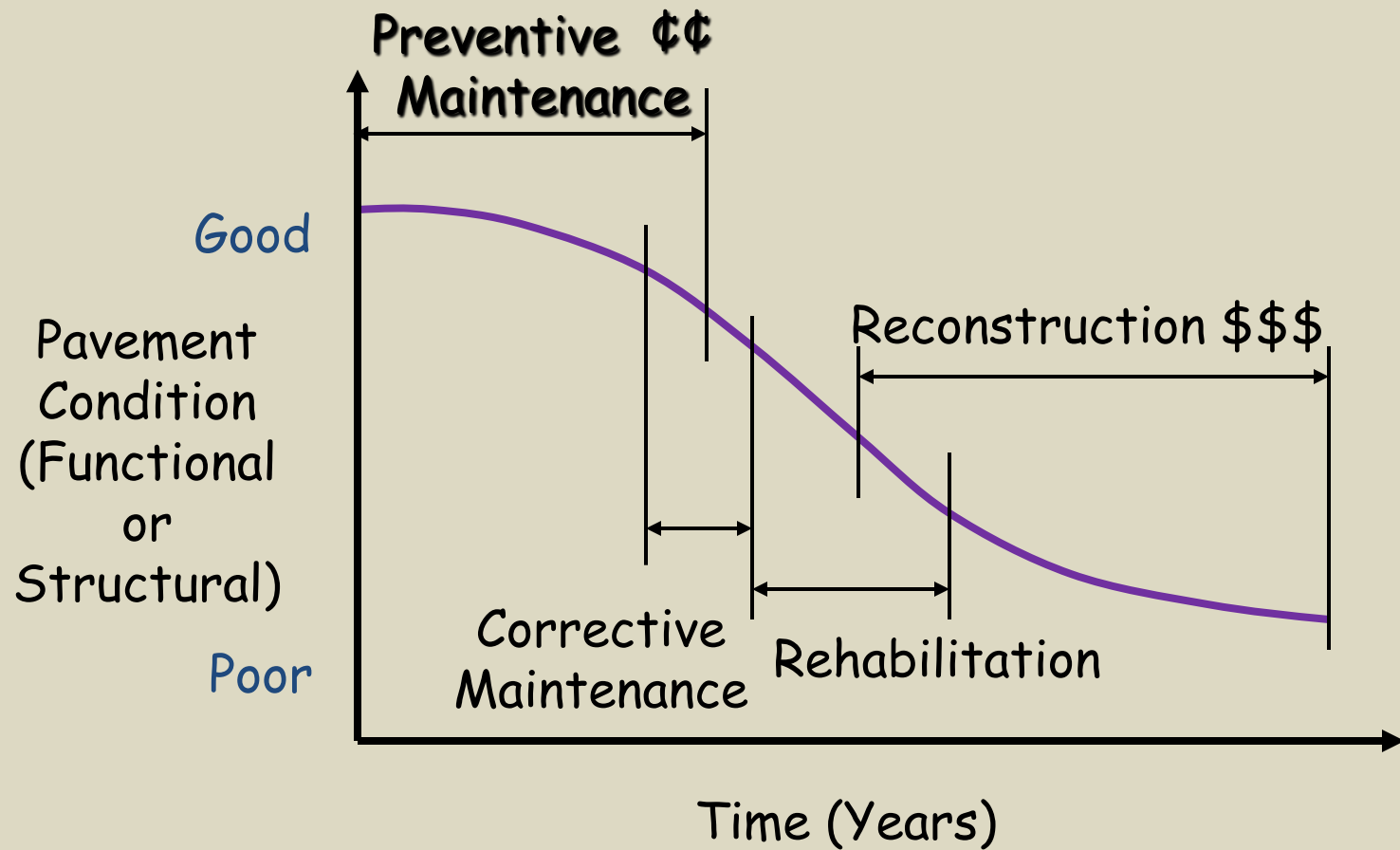
- **Condition Survey Calibration**
  - PCI from Agency Pavement Management Systems (Can't be more than 3 years old)
- **Uniform Regional Road Categories**
  - Arterial, Collector, Rural Highway, Industrial
- **Regional Treatments**
  - Slurry seal, micro-surfacing, thin overlay, patching

# Project Selection Process

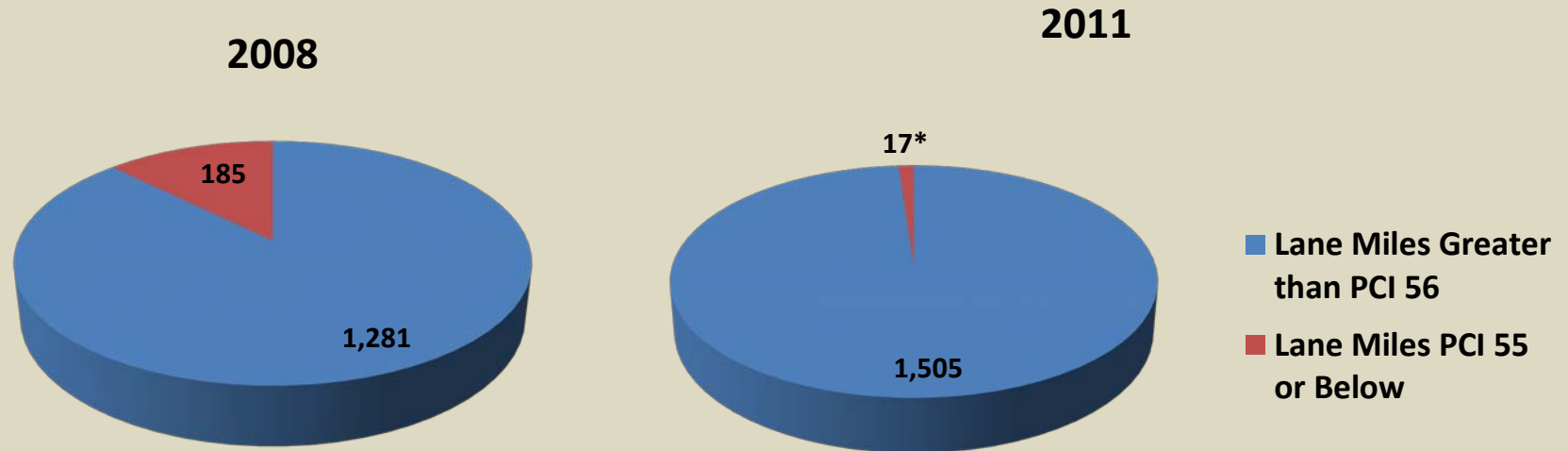
## Program Elements

- **Rehabilitation / Reconstruction**
  - PCI 0-50
  - Rank by Traffic
    - PCI 40-50 Rehabilitation
    - PCI 0-40 Reconstruction
- **Preventive Maintenance**
  - PCI 56-100
  - Structural Distress less than 5%
- **Corrective Maintenance**
  - Everything Else ( $\approx$ PCI 45-65)
  - Variety of Tools
  - Cost Effectiveness
  - Agency Driven

# Pavement Preservation Overview



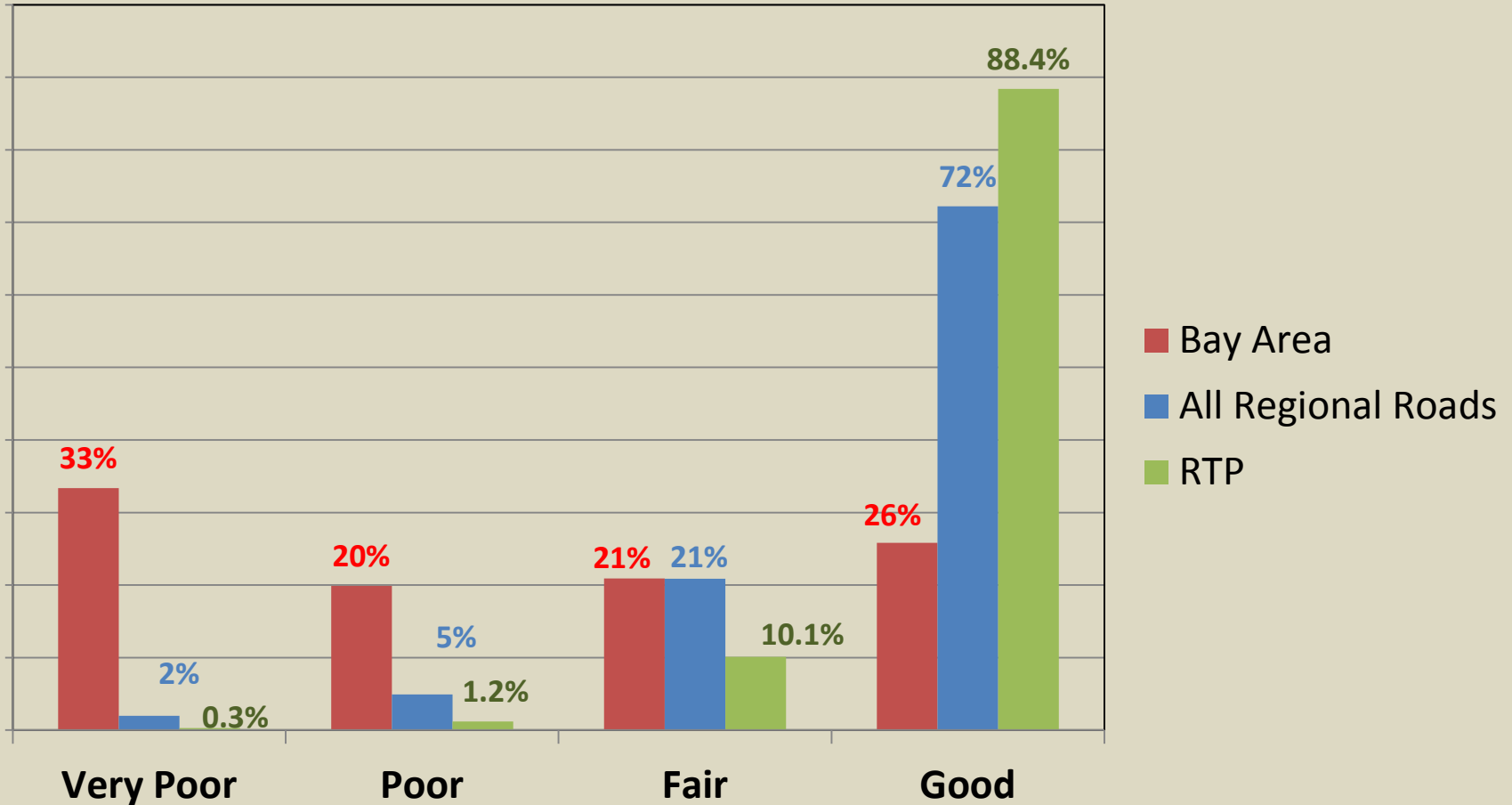
# Current Network Condition and Impact of RTC-5 Bonding



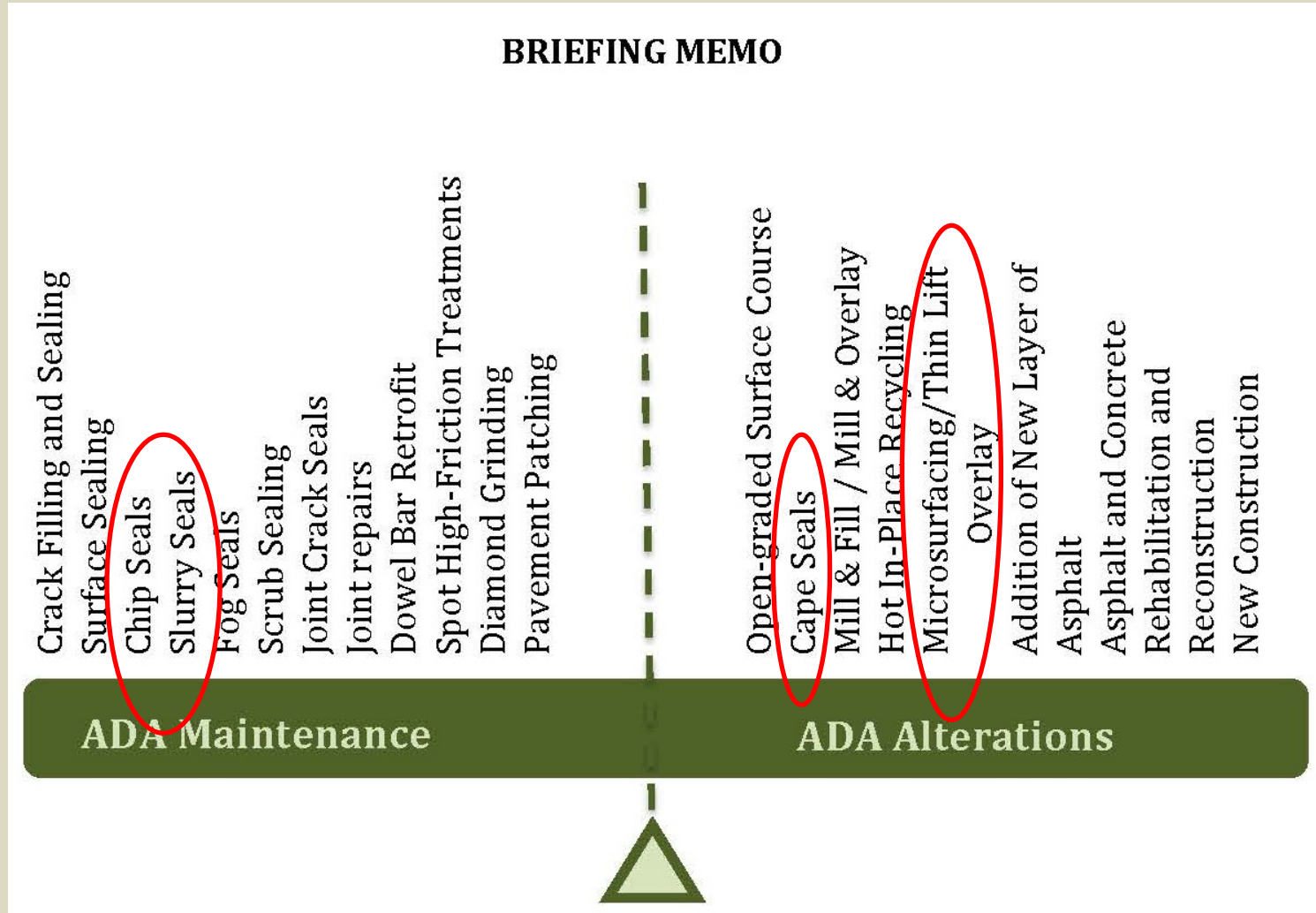
Key Strategy: Preserve Investment with Lower Cost Preventive Treatments.

\*17 Lane Miles of Reconstruction Annually after 2012

# Good Roads are Cheaper!



# ADA Maintenance Vs. ADA Alterations





# Slurry vs. Microsurface

Difference In:	Slurry	Micro
Emulsion	Polymer optional Slow set, quick set Anionic, cationic	Always polymer modified Always cationic quick set
Additives/ Break	More dependent on weather	Chemical break
Mix Stiffness/ Equipment	More workable mix Drag box	Stiffer mix Double auger box Secondary strike-off
Aggregate	Type I, II, III	Type II and III only Higher S.E. (cleaner) More durable
Application	Fill voids, seal ageing pavement, durable wearing course	Same plus+ high traffic, rut filling, night work, correct minor profile irregularities



# Design Considerations

- Slurry and Micro Surfacing Systems are 5 component systems:
  - Aggregate
  - Emulsified Asphalt
  - Water
  - Cement or other mineral fillers (optional)
  - Chemical Additives (as required)



# Micro IS a Slurry Seal

